



**SEADOWN**  
VETERINARY SERVICES

# EQUINE NEWSLETTER

## SEADOWN 100 YEARS OF VETERINARY SERVICES

AUTUMN 2024

### EQUINE CLIENT EVENING

Equine client evening 4<sup>th</sup> December at Lyndhurst Community Centre, talks start at 7pm. Entry will be £3 payable at the door and it includes the usual Seadown buffet. Please email [equine@seadownvets.co.uk](mailto:equine@seadownvets.co.uk) to book in.

We are delighted to have the world-renowned Jim Green talking about his role at the Paris Olympics this year, leading the equine rescue team. His talk will provide a fascinating insight into the "behind the scenes action" at the Olympics.

The second presentation will be topical in our region right now.... Our vet Alice will be discussing strangles and the aspects of biosecurity around this prevalent disease. We will also be discussing the use of "Strangvac" which is the licenced vaccine against Strangles. We will have a technical representative from the company who will be able to answer any questions you may have about the use of the vaccine.



Tom McKewen on Dubs, in the showjumping phase on his way to winning team gold

### POOR PERFORMANCE SPECIAL OFFER

**£350 for lameness examination with gastroscopy.**

Gastric ulcers and orthopaedic conditions (lameness) can often go hand in hand, and as some of the symptoms can be quite similar, deciding where to start investigating these horses can be difficult. In many cases, if we start with a lameness investigation and lameness is diagnosed, then checking for gastric ulcers may be recommended as there is a well-established link between orthopaedic pain and the development of gastric ulcers.

Equally, if gastric ulcers are initially investigated and diagnosed, and particularly if they are proving persistent or difficult to treat, an orthopaedic assessment is often advised to rule in or out lameness as the underlying cause. Recognising that it can be difficult to know where to start, we are pleased to offer an in-clinic package that includes an initial lameness assessment (gait assessment at walk and trot in a straight line and on the hard and soft lunge, if deemed necessary, palpation and discussion of findings) and then an overnight stay in order to fast (empty the stomach) for gastroscopy the following day. We can then pull all the information from our findings together to formulate a plan for further investigation or treatment as needed.

This approach is ideal for any kind of 'poor performance' case, as well as being a great starting point for any lameness of gastric ulcer investigation.

**For November we are offering the poor performance package for £350 to include gastroscopy with sedation, overnight stay and a lameness evaluation including straight line trot up, flexion test and observation on soft and hard lunge.**



© Horse and Hound



© RichardDunwoody/Seadown

Is your horse or pony currently on medication for Cushings syndrome? Or do you suspect they may have Cushing's?

Remember that Autumn is a good time for testing horses and ponies for PPID or Cushing's as the ACTH level that we measure has a natural spike in the Autumn months.

[Careaboutcushings.co.uk](http://Careaboutcushings.co.uk) is a useful site for information and to access voucher codes to entitle you to reduced price Cushing's tests. Please call or email the office for further information.

## Worming advice is evolving...

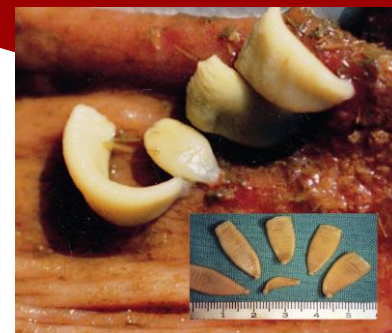
Worming advice has changed due to widespread resistance to wormers and, on a side note, due to growing concern on environmental toxic effects.

We need to avoid treating horses unnecessarily. By doing this we'll preserve the drug's efficacy for when it's needed. Unfortunately, there aren't any new drugs on the horizon. Regular poo picking (at least twice a week) is one of the most effective ways of reducing pasture contamination.

We no longer recommend a routine wormer for encysted redworms (e.g. equest or pramox) in the autumn. In fact, most adult horses are at low risk for encysted redworms disease. Worming should be based on a risk assessment. This considers: Clinical history, Age, Number of horses, Test results, Environment, Risk profile.

We recommend regular worm egg counts through the grazing season. Further tests include a saliva test for tapeworms and a blood test for redworms. Autumn is the right time of the year for these tests.

Our Horse Health Programme (HHP) can help owners with their worming regime which includes 4 worm egg counts annually a tapeworm saliva test along and a worming risk assessment for your horse or pony.



## PRACTICE NEWS

Our vet Alex Tooley and his wife Charlotte recently welcomed baby Oliver into the world, we are sure you will join us in sending our warmest congratulations to them both.



Alice Swetnam who joined us in April this year, how time flies.... Is getting married at the beginning of November to her fiancé James. We wish them every happiness in their married life together.



Here are a few media articles from this year which help demonstrate, that however careful you are, horse will always be horses, and do the unexpected.

<https://www.seadownvets.co.uk/news/horses-will-be-horses-blackthorn-embedded-in-ligament-remains-undetected-for-a-year>



<https://www.seadownvets.co.uk/news/owners-son-to-the-rescue-after-plastic-syringe-causes-nasty-mouth-injury>



<https://www.seadownvets.co.uk/news/stallion-suspended-in-tree-for-three-days-makes-miracle-recovery>



MAIN HOSPITAL: Frost Lane, Hythe SO45 3NG Tel: 023 8084 2237  
[www.seadownvets.co.uk](http://www.seadownvets.co.uk)



facebook

We hope you enjoy our newsletter and find the information helpful, however it should not be used as an alternative to professional veterinary care. If you have any concerns regarding your horses' health please contact your surgery.

