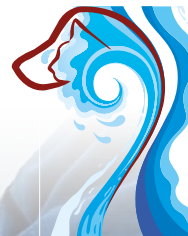


X-RAYS



SEADOWN
VETERINARY SERVICES



Taking radiographs is an essential part of any practice we use a digital processor which allows us to perform good quality x-rays relatively quickly.

Our hospital at Hythe has a small animal radiograph machine on site, allowing us to take and review instant images. The large animal facility has a portable machine that allows us to perform and review x-rays off site. This is especially important in an emergency or if your horse cannot travel for any reason.

Sedation or general anaesthesia is normally necessary to allow us to gain good quality images and ensure your pet is kept safe.

We may have to send your pets radiographs off for a second opinion, however as we have the digital machine we are able to email these on the same day as your pets x-rays which helps to get a quicker response and diagnosis.



Delivering first-class veterinary care to the New Forest since 1923