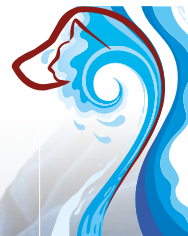


X-RAYS



SEADOWN
VETERINARY SERVICES



Taking radiographs is an essential part of any practice we use a digital processor which allows us to perform good quality x-rays relatively quickly.

We have a small animal radiograph machine on site at our Hythe hospital and a portable large animal machine that allows us to perform x-rays off site. This is especially important in an emergency or if your horse has laminitis and cannot travel.

Sedation or general anaesthesia is normally necessary to allow us to gain good quality images and ensure your pet is kept safe.

We sometimes have to send your pets radiographs off for a second opinion but as we have a digital machine we are able to email these on the same day as your pets x-rays which means a quicker response and diagnosis.



Delivering first-class veterinary care to the New Forest since 1923